

MRT150N

Serial Device Server



- 2 Ethernet LAN ports
- 150 MBit/s wireless N-LAN port
- Built-in Ethernet switch
- USB 2.0 host controller
- USB adaptor with RS-232 serial port
- IPv4/IPv6 dual stack
- Flexible, package based software concept
- Temperature range: 0 to +40°C

The LyconSys MRT150N-SDS is a serial device server. With MRT150N-SDS, you can connect devices with serial ports like point-of-sale or EC card terminals easily and at low cost via WLAN or a local network. This enables you to access the device over your network at any time you want.

Transparent Access to connected Devices

Just connect the device server with the serial port of the device and begin your connection with one or more remote devices over WLAN or Ethernet. It will respond as if it was connected directly to the other device as the device server simulates a direct connection by means of a special software tool (virtual COM port).

Small, Light, and Flexible

The serial device server does not take up space at all on your workplace and is as light as your mobile phone. The connection to the second device is made up flexibly by WLAN or an established local network.

Applications

- Network connection to any serial device
- Wireless LAN access point
- 3G/xDSL routing

LyconSys GmbH & Co.KG

Westhafenplatz 1
60327 Frankfurt am Main
Germany

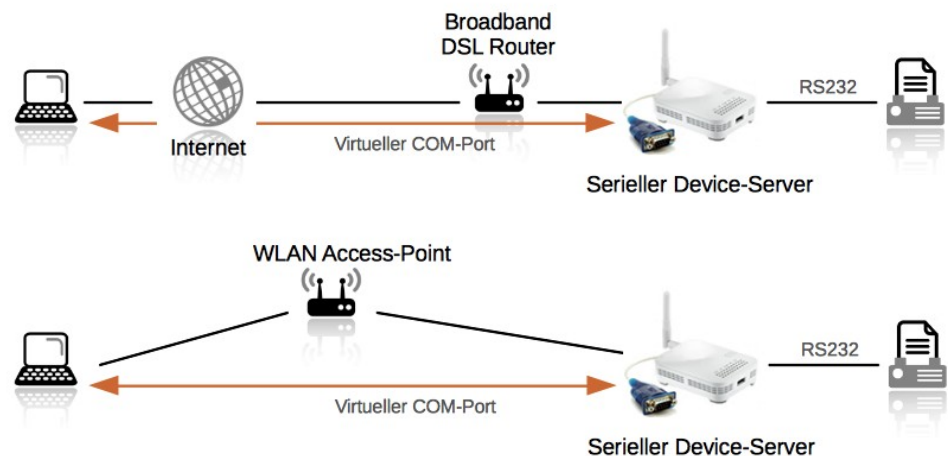
Phone
+49-(0)69-710 456 256

Fax
+49-(0)69-380 979 418 9

E-mail
info@lyconsys.com

Internet
www.lyconsys.com

Version 1.0
All Rights reserved





MRT150N

Serial Device Server

IP and Network Features

Operating modes	IP router, Ethernet switch, wireless LAN client Wireless Access Point
Ethernet routing	IPv4 and IPv6, NAT, PPPoE client/server
Layer-2 switching	VLAN aware switching
TCP/IP	IPv4, IPv6 (dual-stack)
Protocols	ARP, DHCP, DNS, Remote Syslog, ICMP, HTTP, HTTPS, SSH, NTP, RDATE, PPPoE, OpenVPN, IPSec IKEv2, 6to4

Connectors

WAN/LAN interfaces	2 RJ45 Ethernet, 10/100 mbps, MDI/MDI-X, Autonegotiation
Serial Port	1 USB-to-RS232 adaptor (up to 4 adaptors via USB-Hub)
Wireless	1 RP-SMA connector
USB host controller	1 USB 2.0 port
Power supply	12 V DC, max. 12W

Wireless LAN Features

Standards	IEEE 802.11b/g/n
Security options	SSID Broadcast disable WEP 64-/128 bit encryption WPA-/WPA2-PSK (Pre Shared Keys) WPA/WPA2 Enterprise mode (IEEE 802.1x)
Operating frequencies	FCC: 2412 to 2462 MHz (Ch1 to Ch11) ETSI: 2412 to 2472 MHz (Ch1 to Ch13) Japan: 2412 to 2484 MHz (Ch1 to Ch14)

Configuration and Management

Device management	LyconSys web interface (HTTP) CLI via Secure Shell (SSH)
Configuration management	Backup/Restore/Clone function, change history
SW packages (optional)	DHCP Server/Client DynDNS Client E-mail-Client Firewall (TCP/IP package filtering) FTP-Server Preconfigured OpenVPN-Client for mdex service provider NTP-Client OpenVPN-Server/Client SNMP v2c Agent SMS-Client and SMS remote control SSH-Server/Client Mini SSL-Proxy-Server Serial port Device-Server (Virtual COM Port) Network printer server (for USB-printers) Unix Remote Syslog (IPv4, IPv6)
Network Management	

LyconSys GmbH & Co.KG

Westhafenplatz 1
60327 Frankfurt am Main
Germany

Phone
+49-(0)69-710 456 256

Fax
+49-(0)69-380 979 418 9

E-mail
info@lyconsys.com

Internet
www.lyconsys.com

Version 1.0
All Rights reserved



MRT150N

Serial Device Server

Mechanical Data

Housing	Plastic (ABS), table-top or wall-mounting
Safety	IP10
Dimensions	93 x 70 x 26 mm (W x H x T)
Environmental conditions	0 to 40°C (operation) 10 to 85 % (non-condensing)
Weight	200 g
Conformities	CE
Package Contents	MWRT150N, Power adaptor 230V/12V/1A, RJ45 cable, 2dBi antenna

LyconSys GmbH & Co.KG

Westhafenplatz 1
60327 Frankfurt am Main
Germany

Phone
+49-(0)69-710 456 256

Fax
+49-(0)69-380 979 418 9

E-mail
info@lyconsys.com

Internet
www.lyconsys.com

Version 1.0
All Rights reserved

Order Information

Product Description	Order Code
Serial Device Server	MRT150N-SDS